



**Rugged and Reliable, Accurate and Fast.
Sigma introduces weigh-price labeling for the "real world" ...
your plant floor!**



Scanning



Computers



SPC



Labeling



Detection



Consulting



HACCP

Product tracking
Traceability and Quality Assurance Data
Collection Systems



The DK-92, our next generation Weigh Price Labeling machine featuring Sigma's LABELpaq software. This is a fully networked system running on a SQL backbone with proven Sigma computing hardware.

Wireless operation with washdown antenna - 802.11b,g,n

Uses our LABELpaq labeling software. Since our inception in 1995, we have labeled literally millions of trays, cases and pallets. Our LABELpaq software is in use in over 150 plants, by some of the largest food companies in North and South America.

Washdown keypad - perfect for simple data entry.

Integrated all stainless steel weighing platform



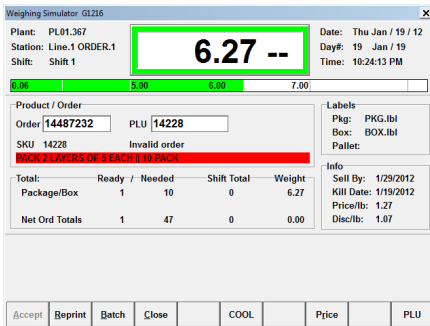
Uses the same standard PC components that are found in our NEMA4X washdown computers. OS is Windows 7 32 or 64 bit.

12" gasketless and sealed washdown touchscreen. The operator never touches our touchscreen

All stainless steel housing and very rugged label present fan mechanism.

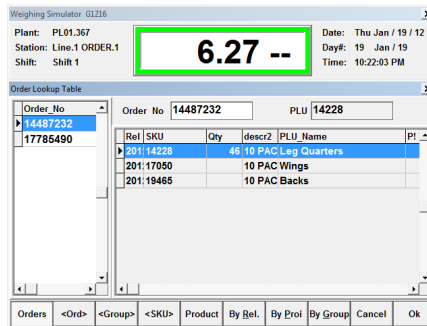
Labels are printed by the extremely durable Datamax A Class print engine

Datamax label printer for case labels (not pictured)



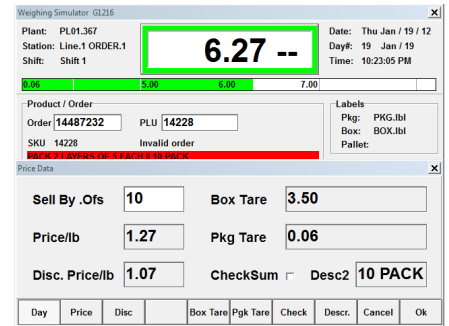
Main LABELpaq Production Screen

- Displays all of the pertinent information that the operator needs to monitor
- Shows Sell By Date, Price Per Lb., Discounted Price Per Lb.
- Allows the operator to view the number of packages per box
- Shows the number of boxes complete for this order on this scale and all scales
- Displays notes to the operator about any special handling needs



LABELpaq Order Selection

- Allows the operator to view all orders assigned to this machine
- Allows for a simple one touch change from order to order
- Shows the operator how many boxes are needed to complete the order
- The Order Driven software is designed so the operator doesn't need to change any of the settings on the order
- Allows for over run or a hard stop on the order target number of cases



LABELpaq Manual Entry

- If needed LABELpaq can be configured to work in the traditional Manual Mode
- Manual Mode allows for the operator to enter all of the variable information
- The configuration can also lock the operator out of certain fields
- Manual entries can be made through the touch screen or the keypad
- Same user interface as the Order Driven Mode